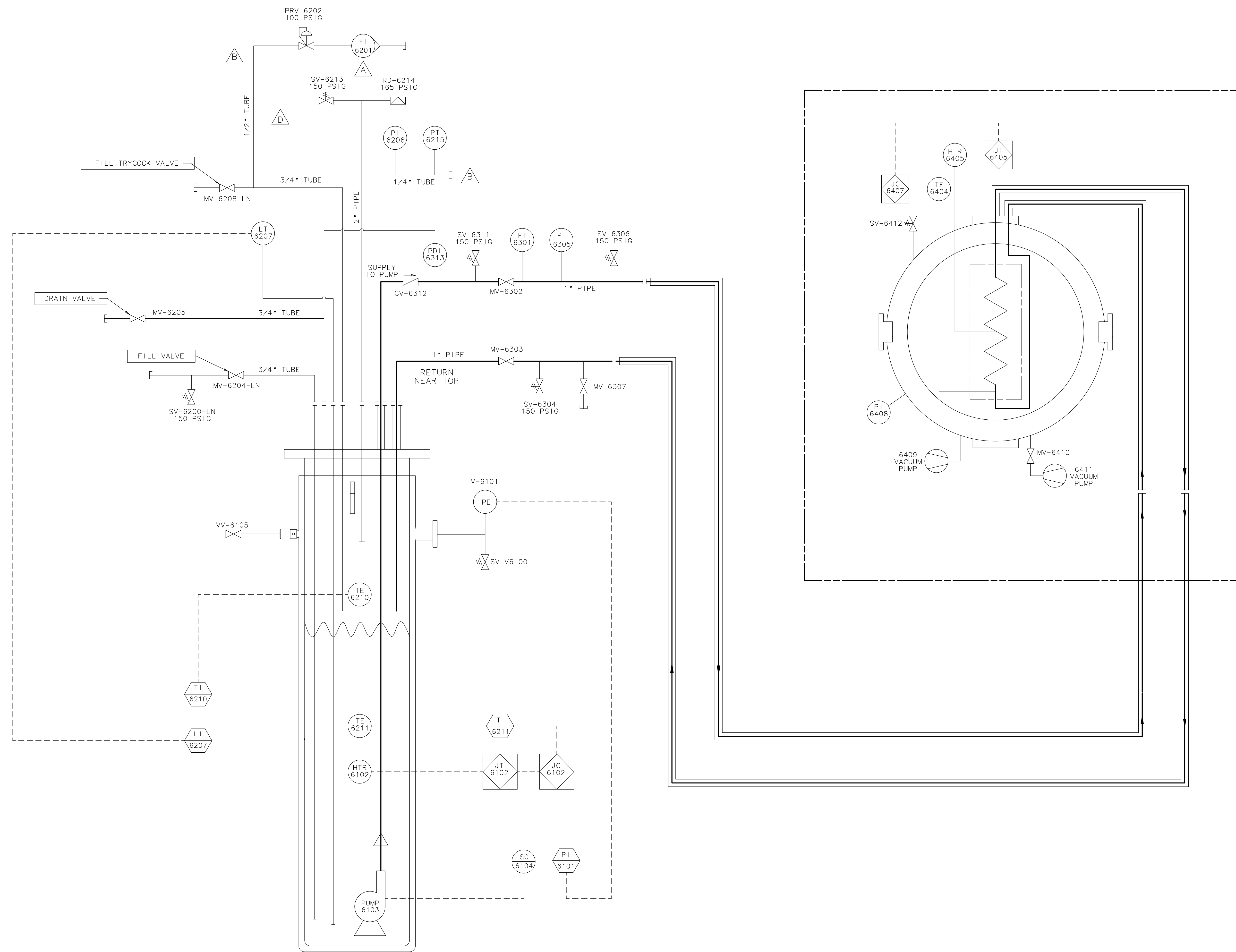


REV	DESCRIPTION	DRAWN	DATE
A	MV-6216 & F-6217* ADDED. *F1-6201* WAS ON OPPOSITE SIDE OF *MV-6201*	J. CATALANELLO	25-JUL-2008
B	MISC. CHANGES MADE.	H. CEASE	31-JUL-2008
C	ADD VACUUM.	J. CATALANELLO	24-NOV-2008
D	REMOVED SV-6218, F-6217, MV-6216, MV-6201 & MV-6300.	H. CEASE	22-JUN-2009
		J. CATALANELLO	24-SEP-2009
		H. CEASE	24-SEP-2009



UNLESS OTHERWISE SPECIFIED	ORIGINATOR	H. CEASE	22-MAY-2007
±	DRAWN	J. CATALANELLO	18-JUL-2007
±	CHECKED	J. RAUCH	10-JUL-2008
±	APPROVED	H. CEASE	10-JUL-2008

1. BREAK ALL SHARP EDGES
2. DO NOT SCALE DRAWING.
3. DIMENSIONS BASED UPON
ASME Y14.5M-1994
4. MAX. ALL WOOD SURFACES
5. DRAWING UNITS: U.S. INCH

FERMI NATIONAL ACCELERATOR LABORATORY
UNITED STATES DEPARTMENT OF ENERGY

DECAM/CONCEPTS
DECAM LAB A LN2 TEST
CAMERA VESSEL COOLING

SCALE: NO SCALE
DRAWING NUMBER: 4900.000-ME-436389
SHEET: 1 OF 1
REV: D

CREATED WITH: Ideos12NXSeries | GROUP: PPD/MECHANICAL DEPARTMENT

NOTICE: IMAGE OBTAINED FROM FERMI-LAB WEB SITE
This information is provided for REFERENCE use only.
Not for MANUFACTURE, or DESIGN INFORMATION.
All information contained in this document represents
work sponsored by an agency of the U.S. Government.
Neither the U.S. Government nor any agency thereof,
nor Universities Research Association, Inc., nor any of
their employees or officers, makes any warranty, express
or implied, or assumes any legal liability or
responsibility for the accuracy, completeness, or
usefulness of any information, apparatus, product or
process disclosed, or represents that its use would not
infringe privately owned rights.