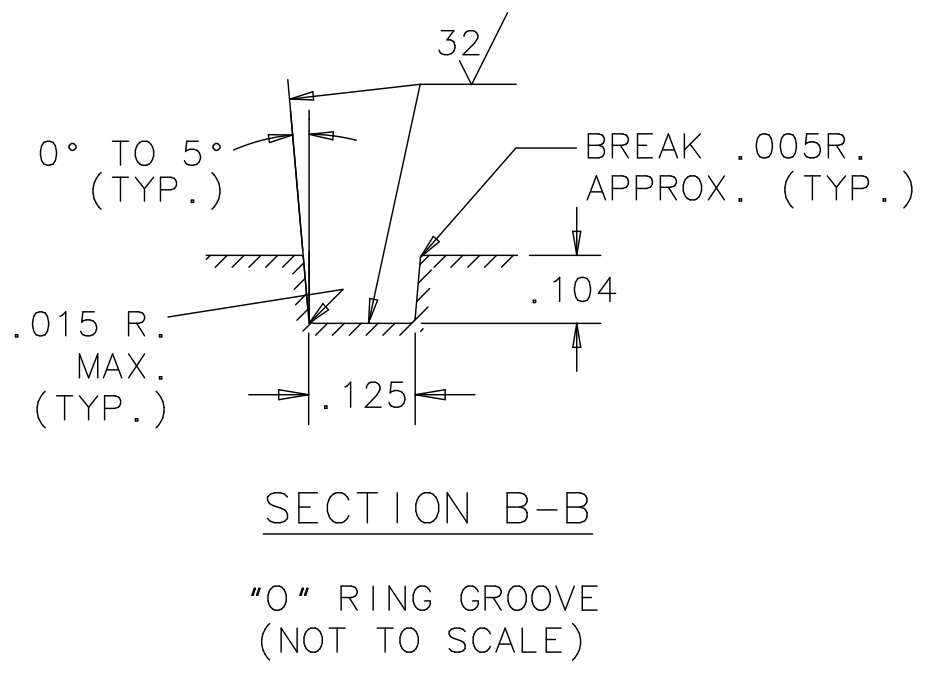
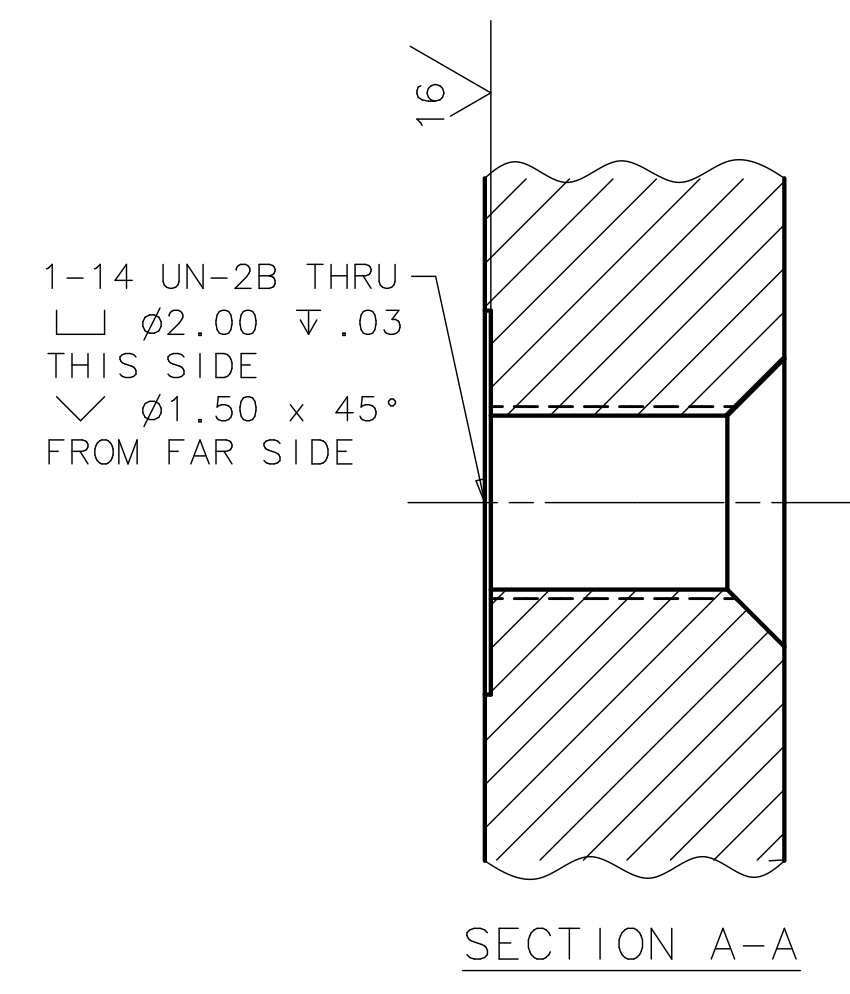
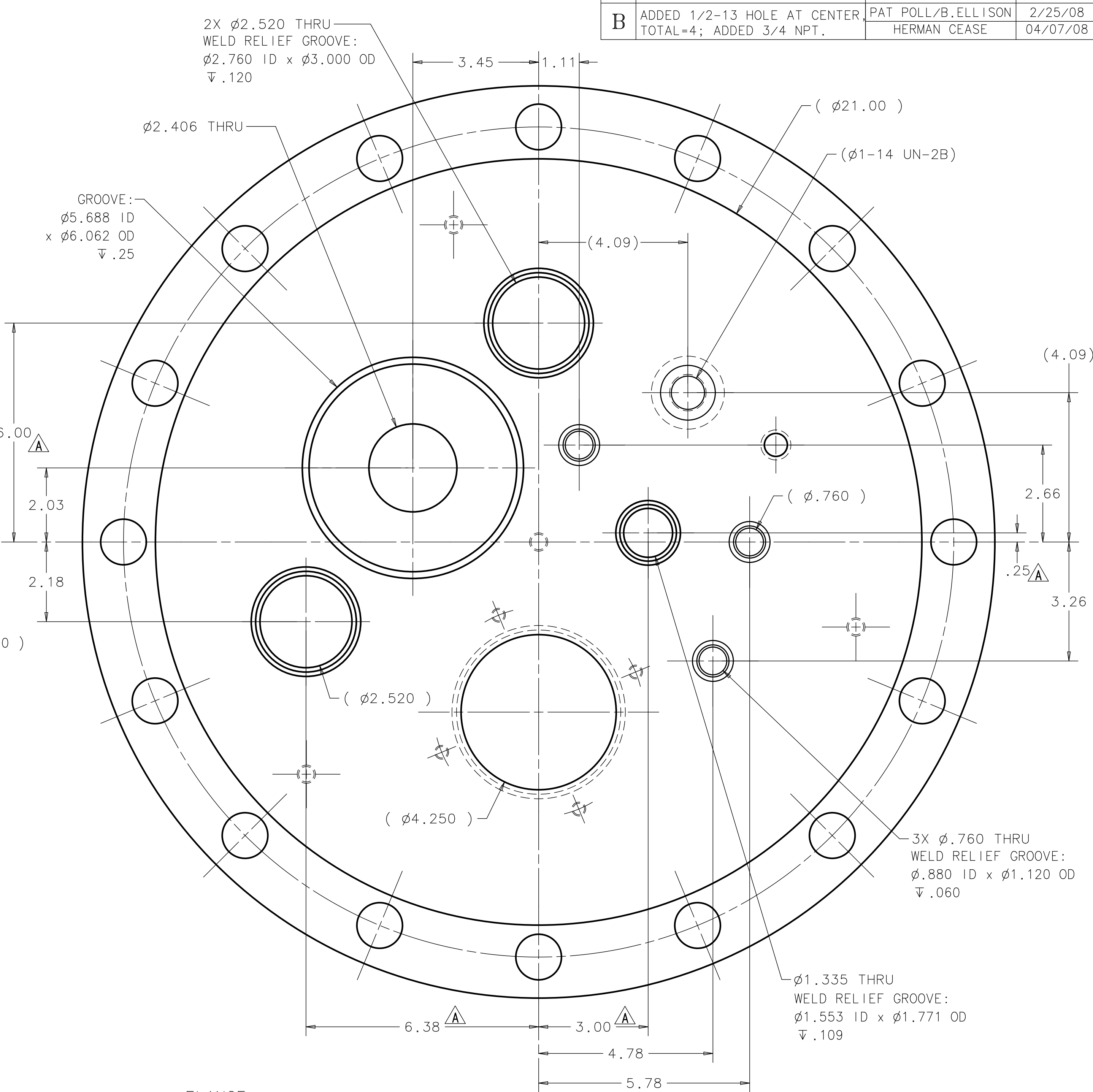
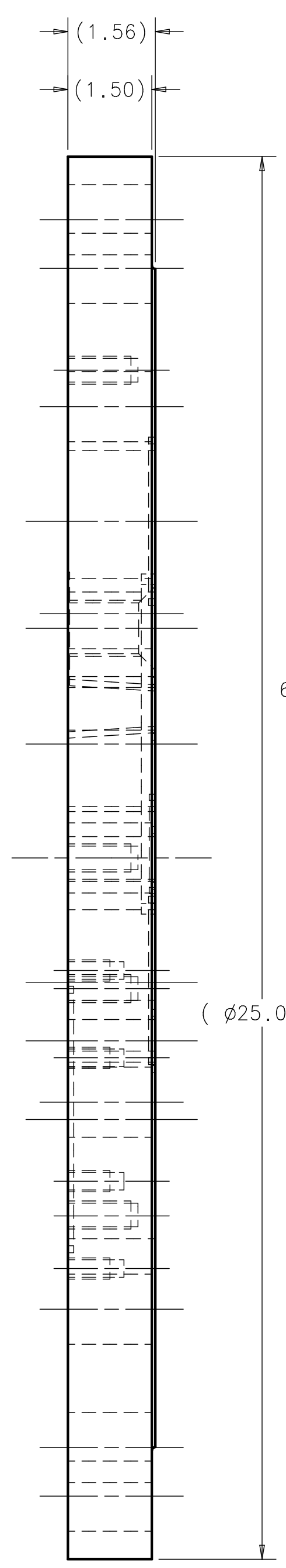
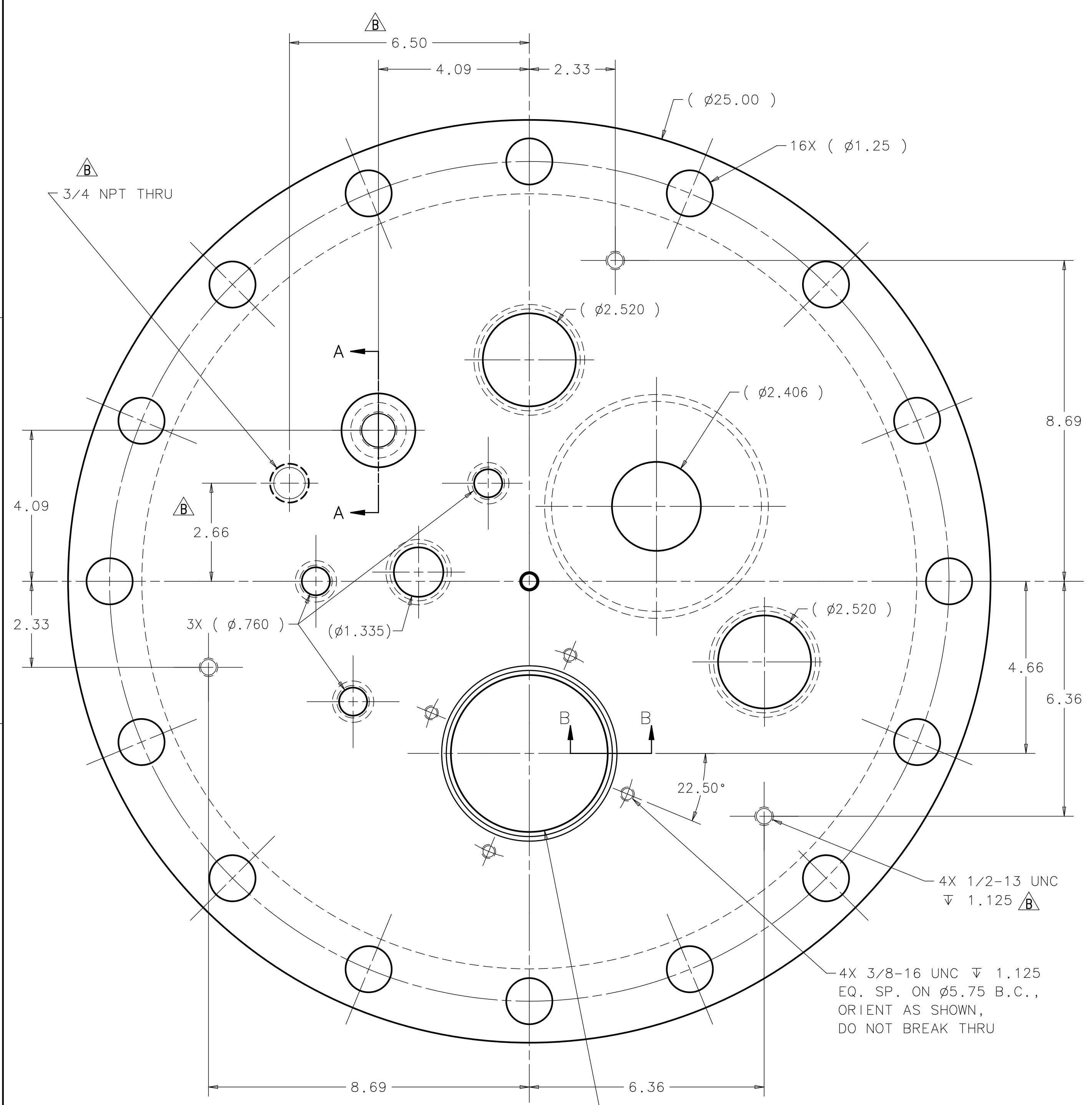


REV	DESCRIPTION	DRAWN	DATE
		APPROVED	DATE
A	REV. DIM.: $\phi 4.25$ , WAS $\phi 4.00$ ; 6.00, WAS 5.78; 6.38, WAS 6.17; MOVED $\phi 1.335$ : 3.00, WAS 2.88;	PAT POLL	02/06/08
B	ADDED 1/2-13 HOLE AT CENTER TOTAL=4; ADDED 3/4 NPT.	PAT POLL/B.ELLISON HERMAN CEASE	2/25/08 04/07/08



**FLANGE**  
 18" BLIND FLANGE, 150 LB.  
 25" OD x 1.56 THK.,  
 16 MTG. HOLES @  $\phi 1.25$   
 T304/304L  
 McJUNKIN CORP. P/N 7310-0365  
 WT.: 195 LBS. (AS SHOWN)

UNLESS OTHERWISE SPECIFIED			ORIGINATOR	H.CEASE	31-JUL-2007
.XX	.XXX	ANGLES	DRAWN	P.POLL	05-SEP-2007
$\pm .02$	$\pm .005$	$\pm .25^\circ$	CHECKED	J.RAUCH	24-JAN-2008
1. BREAK ALL SHARP EDGES .015 MAX.			APPROVED	H.CEASE	24-JAN-2008
2. DO NOT SCALE DRAWING.			USED ON		
3. DIMENSIONS BASED UPON ASME Y14.5M-1994			ME-436466		
4. MAX. ALL MACH. SURFACES 125			MATERIAL		
5. DRAWING UNITS: U.S. INCH			SEE NOTE		

**FERMI NATIONAL ACCELERATOR LABORATORY**  
 UNITED STATES DEPARTMENT OF ENERGY

**DECAM/CCDS**  
 TEST VESSEL ASSEMBLY  
 TOP FLANGE

SCALE	DRAWING NUMBER	SHEET	REV
1:4	4900.120-MD-436428	1 OF 1	B

CREATED WITH: Ideas12NXSeries GROUP: PPD/MECHANICAL DEPARTMENT