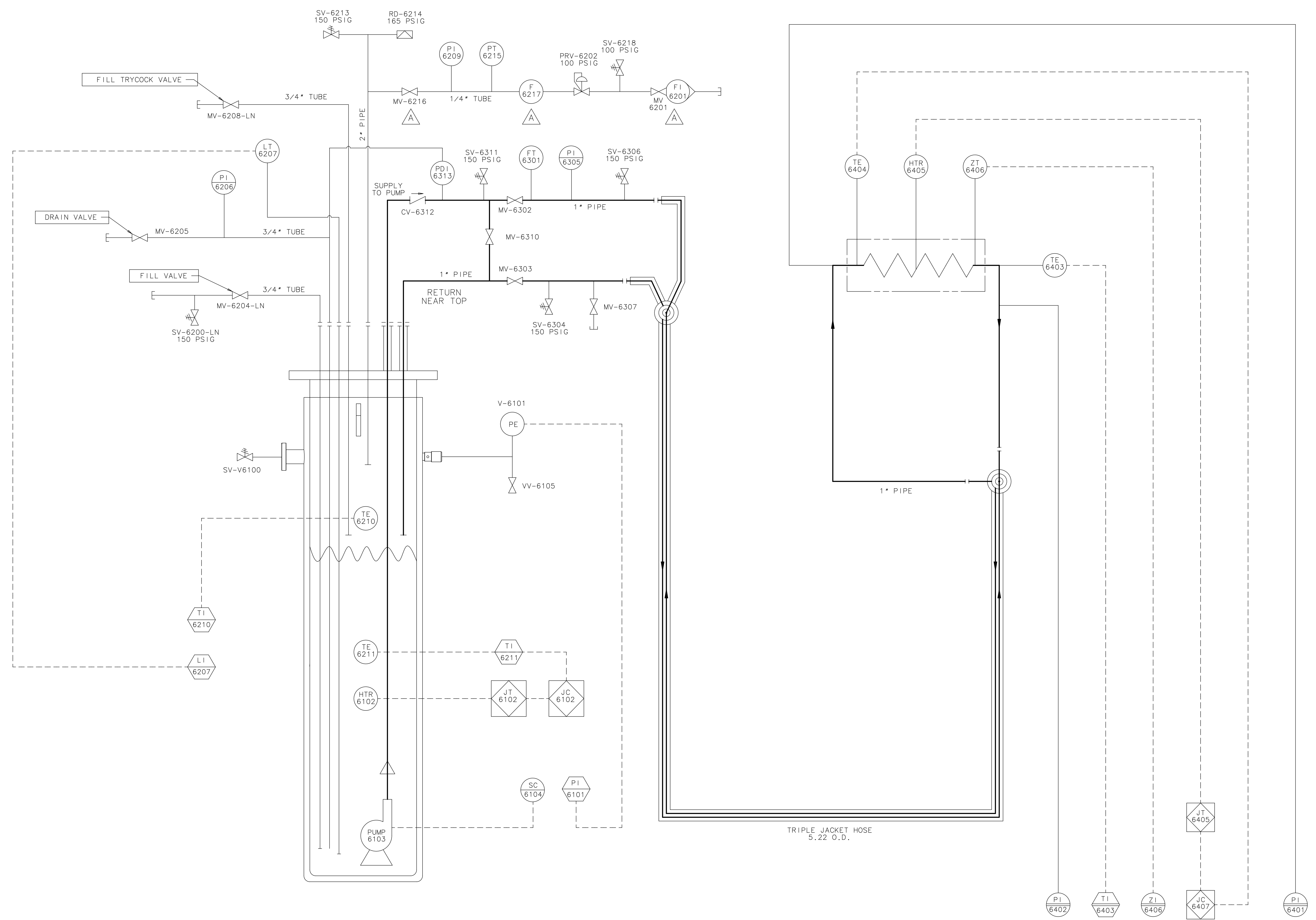


REV	DESCRIPTION	DRAWN	DATE
A	*MV-6216* & *F-6217* ADDED. *F1-6201* WAS ON OPPOSITE SIDE OF *MV-6201*.	J. CATALANELLO	25-JUL-2008
		H. CEASE	31-JUL-2008



UNLESS OTHERWISE SPECIFIED	ORIGINATOR	H. CEASE	22-MAY-2007
±	DRAWN	J. CATALANELLO	18-JUL-2007
±	CHECKED	J. RAUCH	10-JUL-2008
±	APPROVED	H. CEASE	10-JUL-2008
1. BREAK ALL SHARP EDGES MAX.	USED ON		
2. DO NOT SCALE DRAWING. DIMENSIONS BASED UPON ASME Y14.5M-1994	MATERIAL		
3. DIMENSIONS BASED UPON ASME Y14.5M-1994			
4. MAX. ALL MACH. SURFACES			
5. DRAWING UNITS: U.S. INCH			

FERMI NATIONAL ACCELERATOR LABORATORY
 UNITED STATES DEPARTMENT OF ENERGY
 DECAM/CONCEPTS
 DECAM LAB A LN2 TEST
 CAMERA VESSEL COOLING

SCALE	DRAWING NUMBER	SHEET	REV
NO SCALE	4900.000-ME-436389	1 OF 1	A

CREATED WITH: Ideas12NXSeries GROUP: PPD/MECHANICAL DEPARTMENT